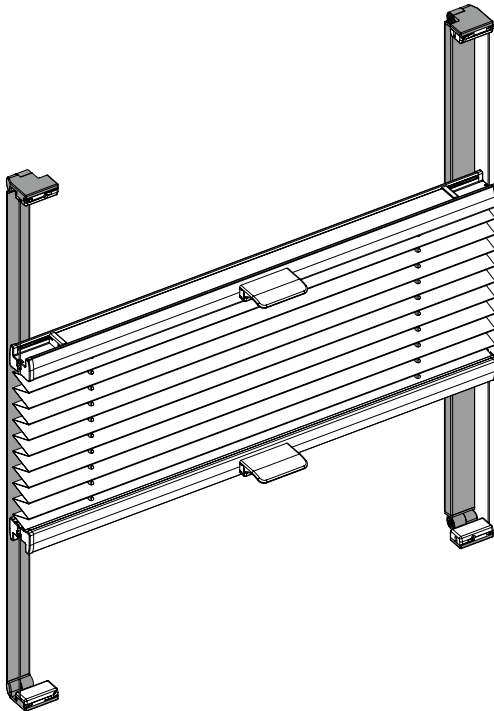
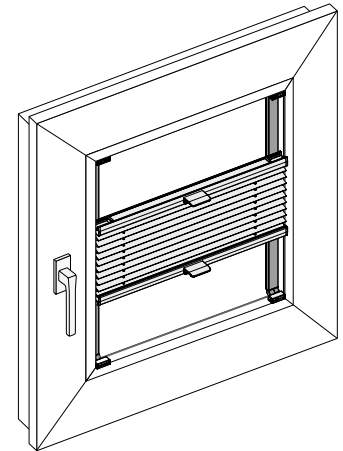


ESG2 KL

Montage- und Bedienanleitung

*Assembly and operating instructions
Notice de montage et mode d'emploi*



Hinweis:

Luftenschlüsse innerhalb der Klebefläche stellen keinen Reklamationsgrund dar, solange die Funktion des Profils nicht beeinträchtigt wird.

Advice:

Entrapped air within the adhesive area does not constitute a reason for complaint as long as the function of the rail is not affected. sous réserve de modifications techniques

Avis:

Les bulles d'air à l'intérieur de la surface adhésive ne constituent en aucun cas un motif de réclamation dans la mesure où cela n'altère pas le fonctionnement du profilé.

Wichtig! Bitte mit der Pflegeanleitung aufbewahren!

Important! Please keep together with care instructions!

Important! Conserver ensemble avec les conseils d'entretien!

04 / 2016

technische Änderungen bleiben
vorbehalten

*subject to technical change
sous réserve de modifications techniques*



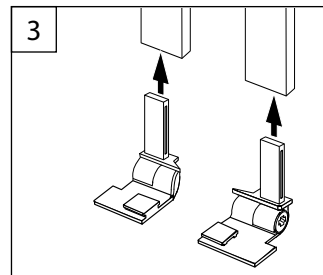
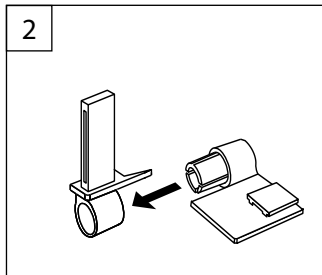
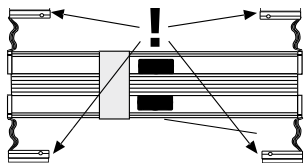
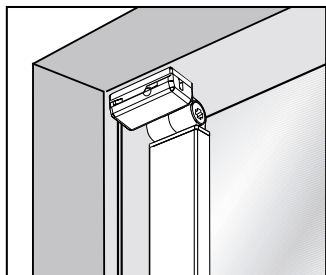
04046046452751

A Montage

Fixation – Montage

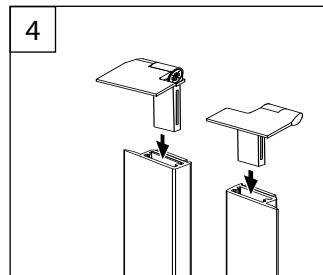
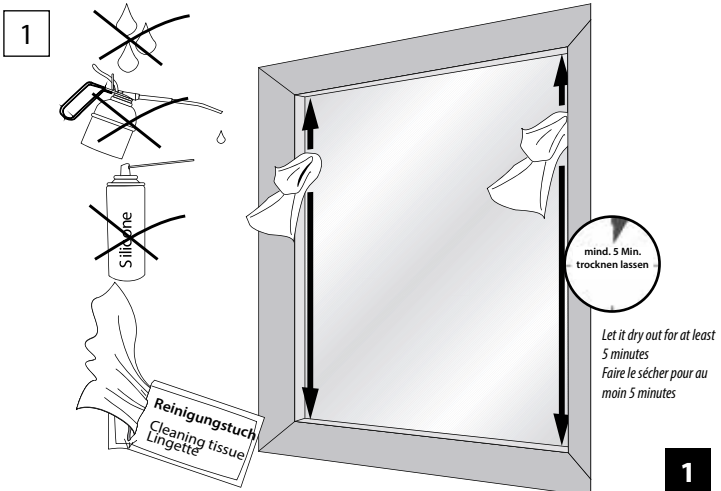
FALZMONTAGE

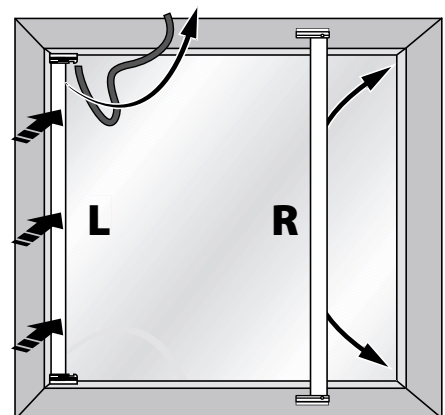
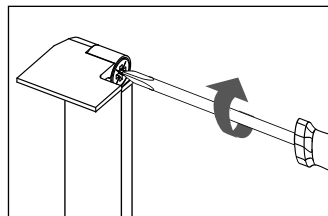
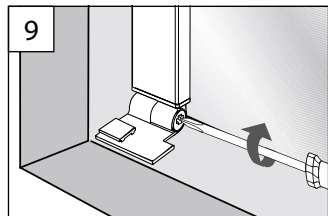
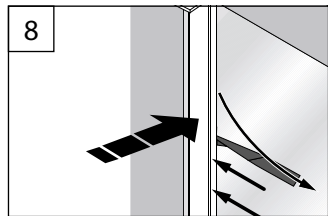
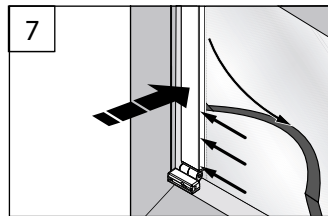
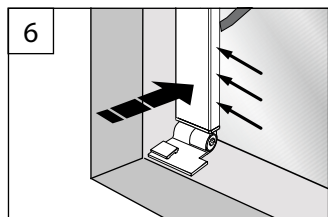
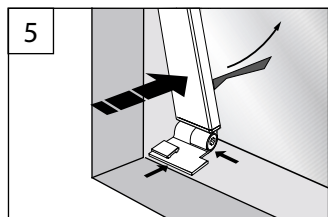
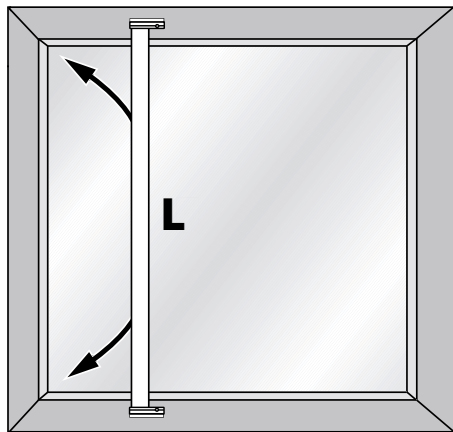
TOP FIXING – DANS LA RAINURE



Montage mit Klebprofil direkt auf der Glasscheibe

Mounting of the adhesive profile directly on the pane
Montage avec profile à coller directement sur la vitre.





B Demontage

Dismantling - D montage

