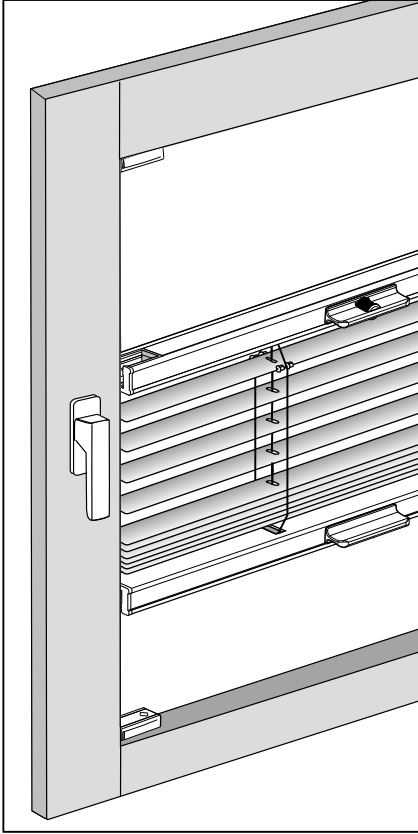
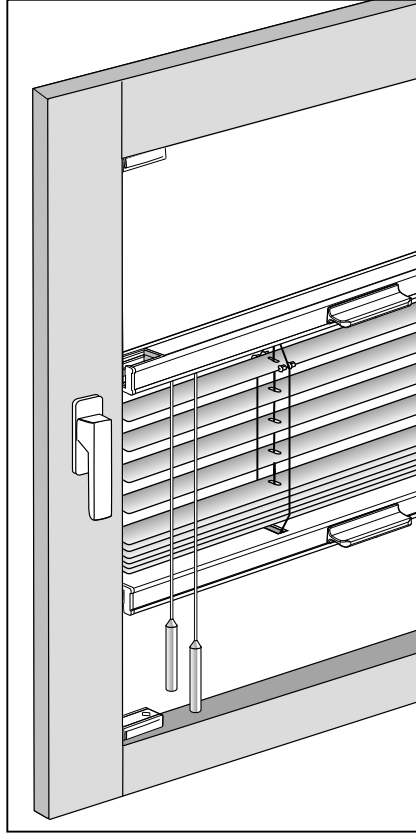


HORIZONTAL-JALOUSIE **TwinLine** | Stores vénitiens TwinLine

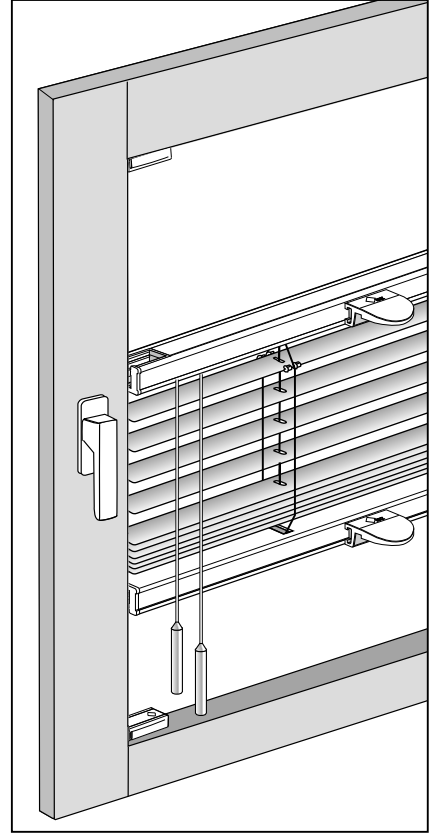
Modell 09-7080, 09-7180
Modèle 09-7080, 09-7180



Modell 09-7081, 09-7181
Modèle 09-7081, 09-7181

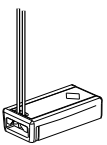
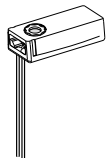


Modell 09-7082, 09-7182
Modèle 09-7082, 09-7182

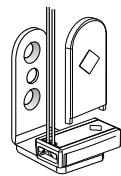
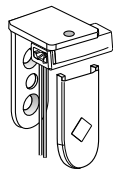


Zubehör / Accessoires

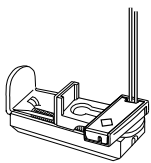
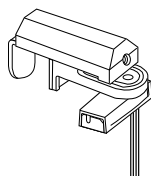
Spannschuh
socle tendeur



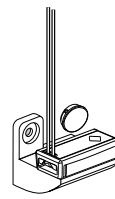
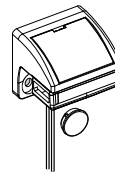
Wandträger
support mural



Klemmträger
support pince

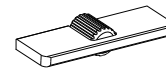


Glasleistenträger
support parclose

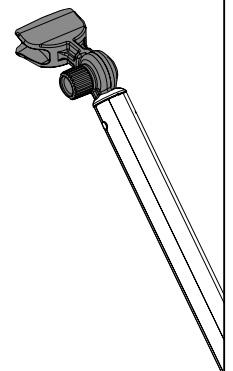


Sonderzubehör / Accessoires spéciaux

Aluminiumgriff
Poignée
aluminium



Bedienstab
tringle de
manœuvre

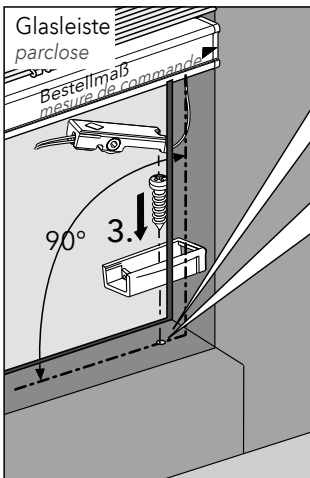
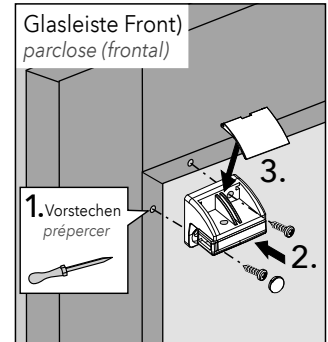
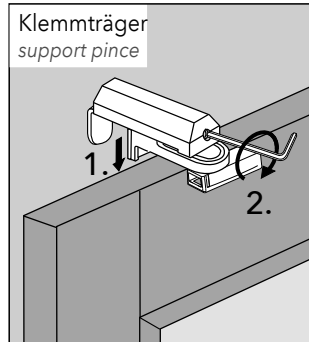
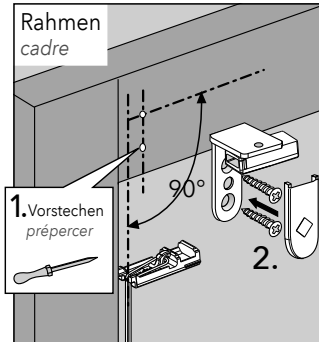
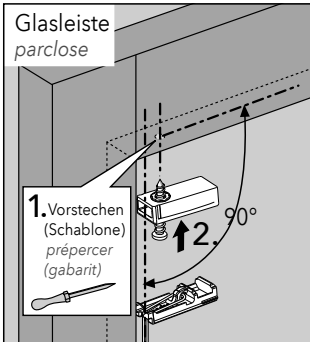


070055755

Achtung: Bei Verwendung von Hilfsmitteln (Leitern, Bohrmaschinen usw.) zur Installation und Pflege unseres Produkts unbedingt Sicherheitshinweise der Hersteller beachten.

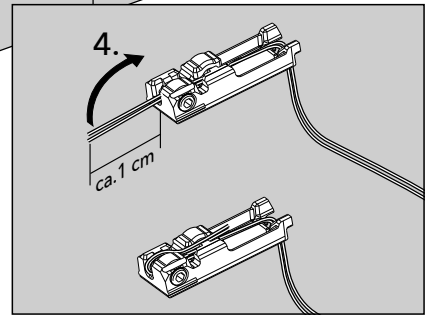
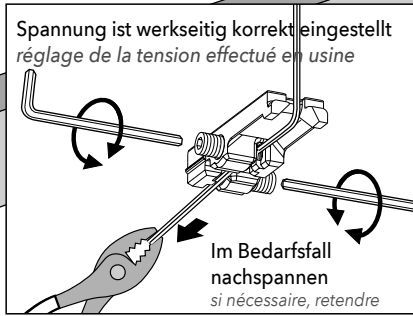
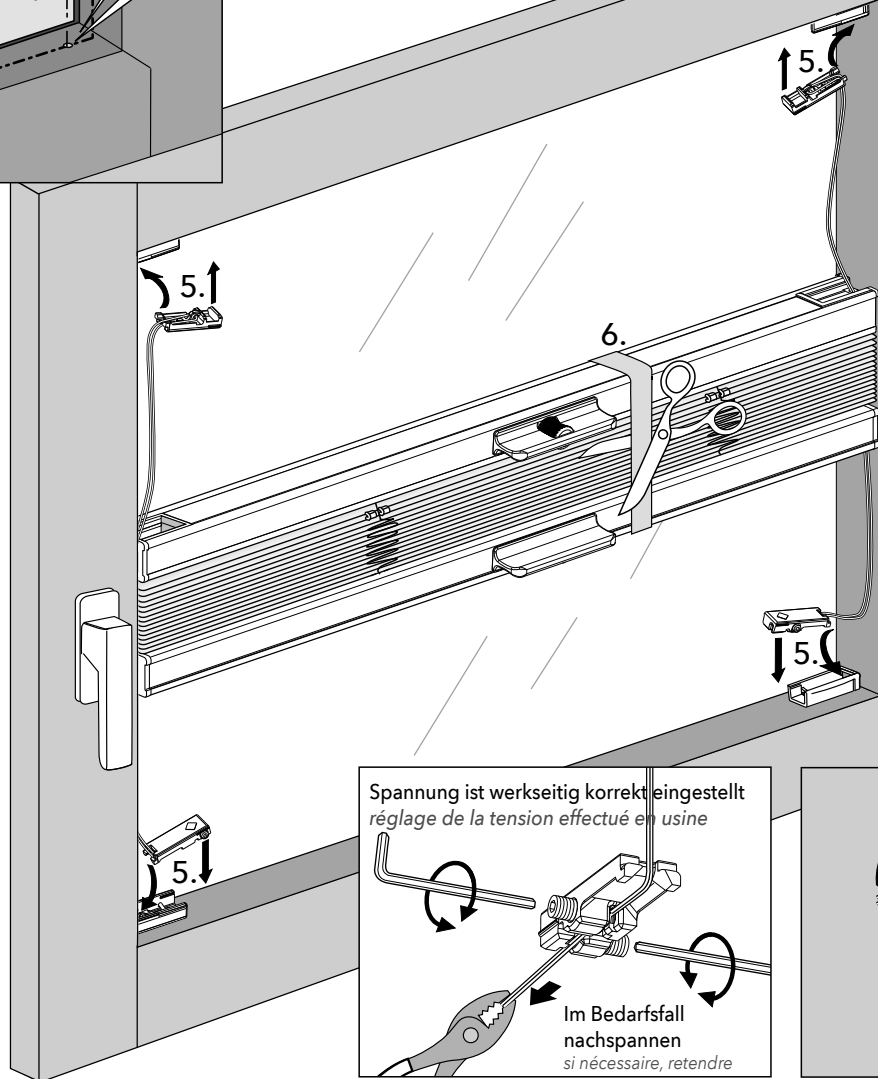
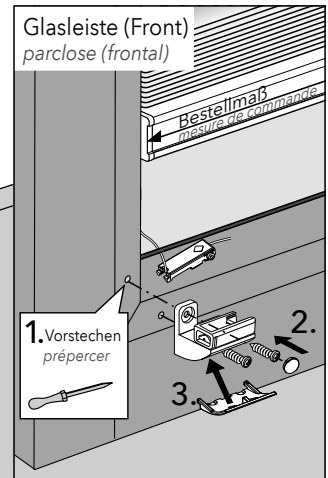
Attention: En cas d'utilisation d'échelles, foreuses etc. pour l'installation ou l'entretien de nos produits, veuillez respecter les notices des fabricants.

Montage / Fixation

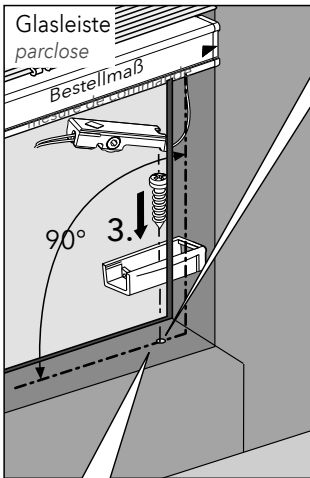
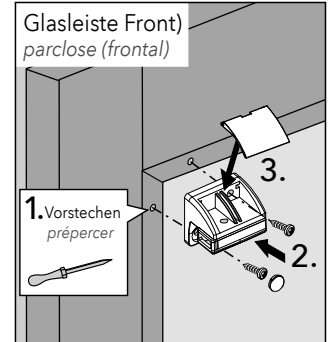
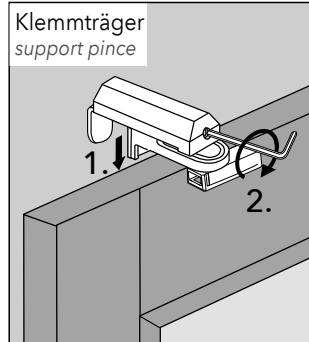
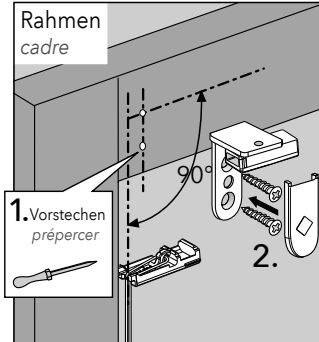
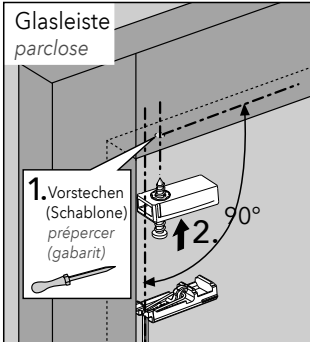


Achtung:
Ausgleichskeil entsprechend der Glasleistenschräge verwenden, siehe Preisliste Seite 105
Attention :
utilisation d'une cale de compensation en fonction de l'inclinaison de la parclose, voir tarif p. 105

1. Vorstechen prépercer
Achtung:
Montageschablone verwenden.
Bedienanleitung Montagehilfe S. 4 beachten.
Attention : utilisation d'une gabarit de montage, voir notice de montage à la p. 4

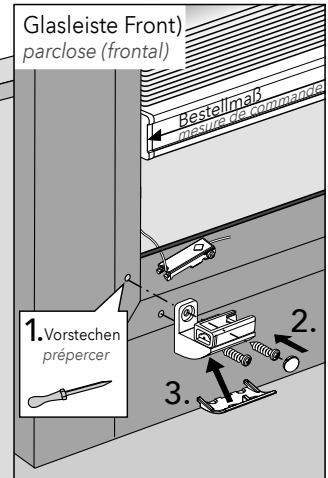


Montage mit Pendelsicherung / Fixation avec cable tendeur

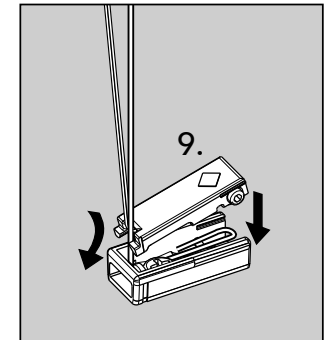
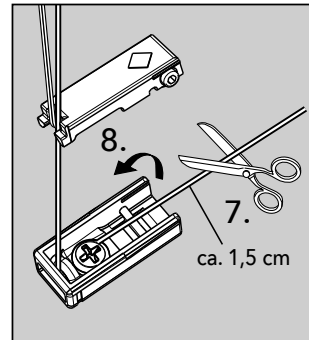
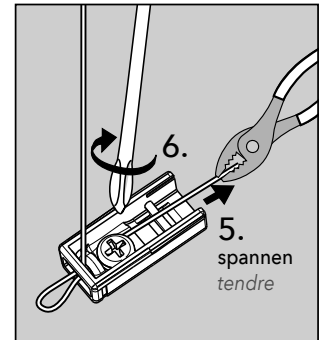
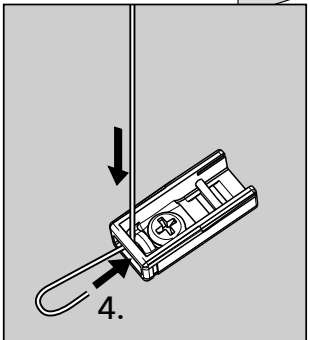
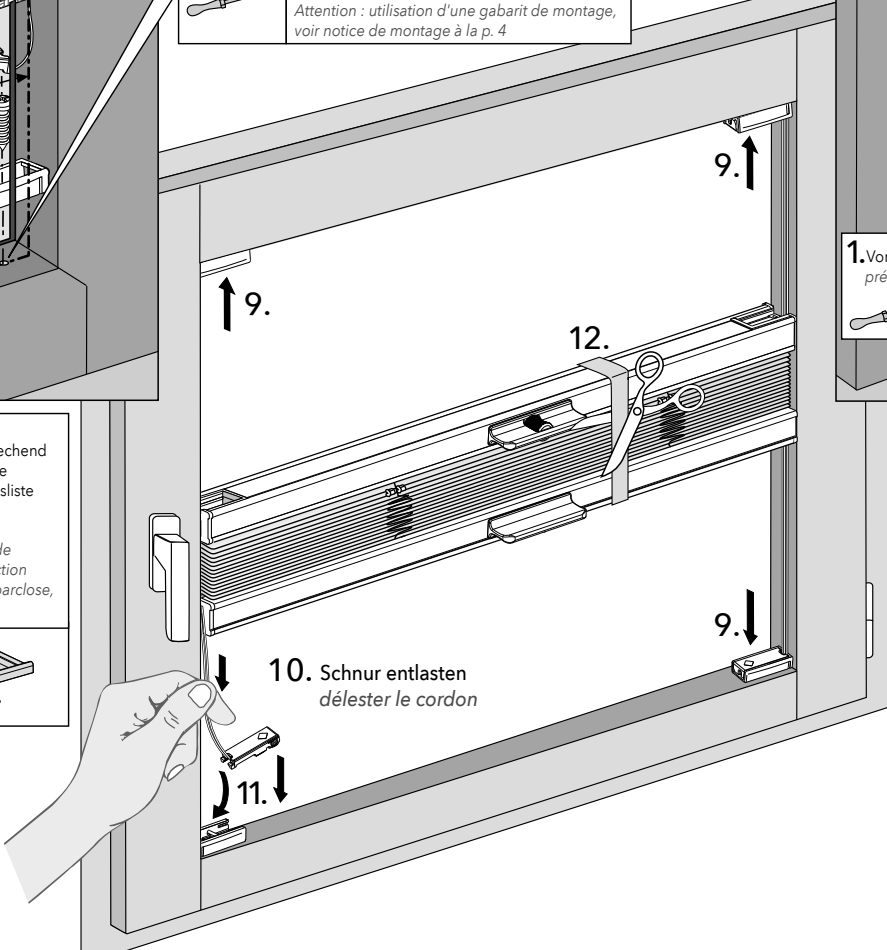


1. Vorstechen
prépercer

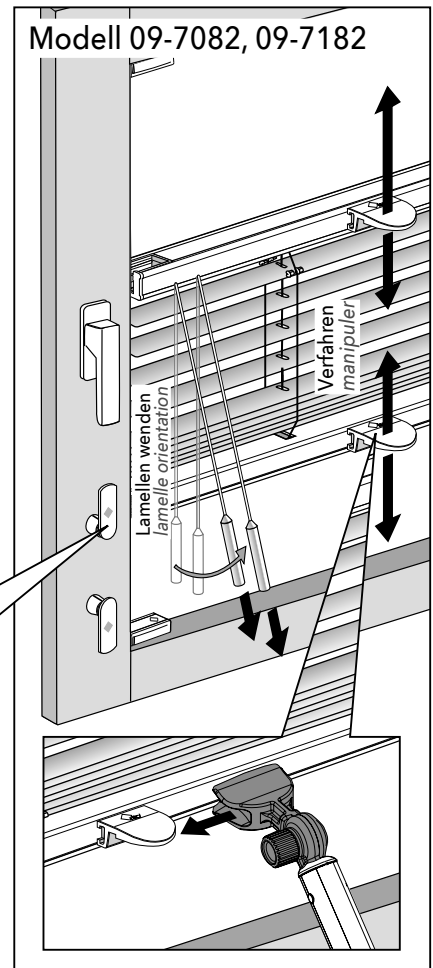
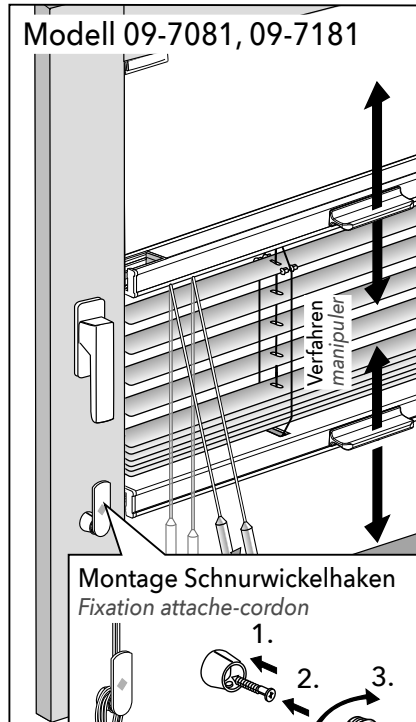
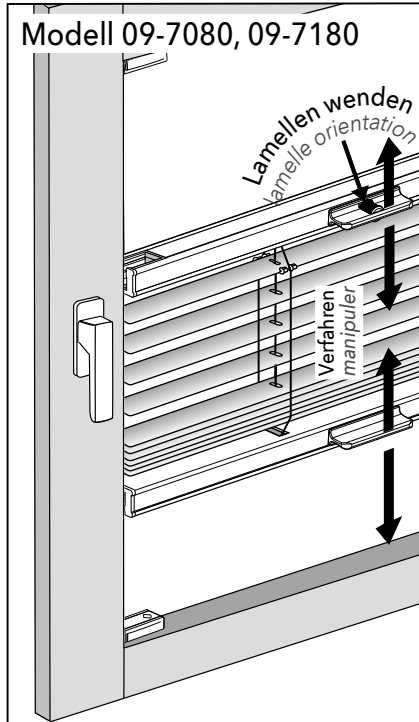
Achtung:
Montageschablone verwenden.
Bedienanleitung Montagehilfe S. 4 beachten.
*Attention : utilisation d'une gabarit de montage,
voir notice de montage à la p. 4*



Achtung:
Ausgleichskeil entsprechend
der Glasleistenschräge
verwenden, siehe Preisliste
Seite 105
Attention :
utilisation d'une cale de
compensation en fonction
de l'inclinaison de la parclose,
voir tarif p. 105



Bedienanleitung / Indication de manipulation



Bedienungsanleitung Montagehilfe
(nicht im Lieferumfang enthalten)
Notice de montage / Gabarit de montage
(non compris dans la livraison)

